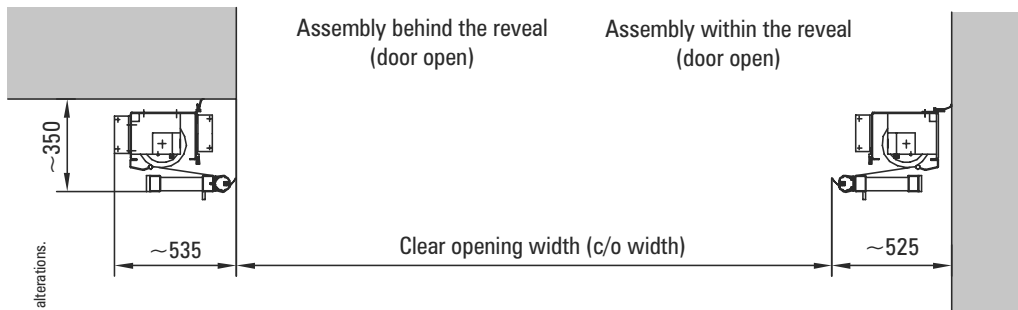
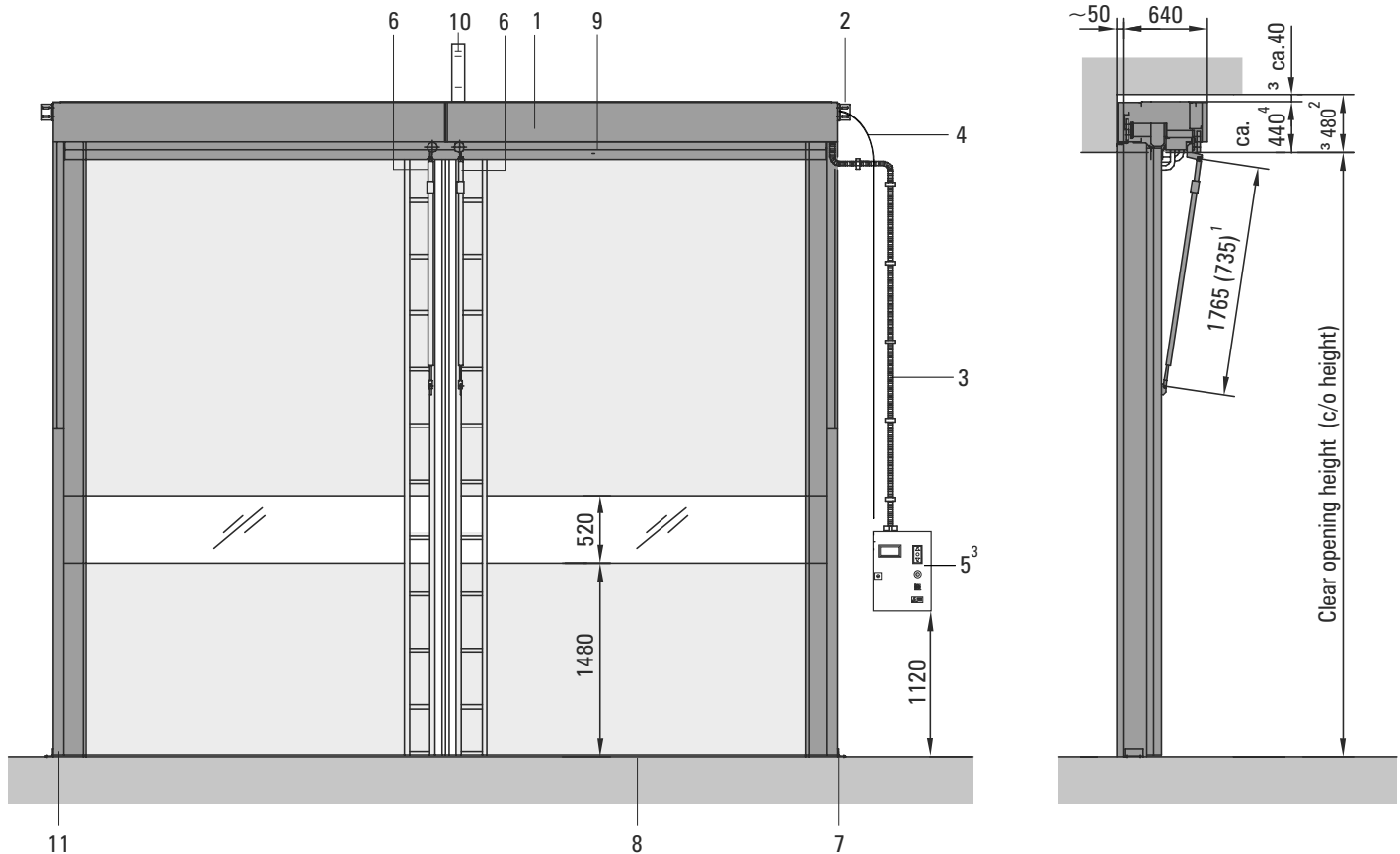


Technical Data

High-Speed Door NOVOSPRINT® SyncroXL



- 1 = Head section incl. top cover
- 2 = Top fixing bracket
- 3 = Cable guide
- 4 = Emergency operation¹⁾
- 5 = Control panel³⁾
- 6 = Stay bar
- 7 = Bottom fixing bracket
- 8 = Functional gap
- 9 = Bottom cover
- 10 = Head section support centrally
(required from c/o width: 6851,
included in delivery)
- 11 = Finger protection (height: 2500 mm)

¹⁾ 735 for c/o height £:£749

²⁾ space required for assembly under the reveal

³⁾ standard location: right side, left side upon request

⁴⁾ from c/o width = 6851: 840 mm

Note! For further details see dimensional drawings

Technical Data · High-Speed Door NOVOSPRINT® SyncroXL

		Single skin
Opening speed [m/s]*	Up to (Standard) / (Option)	2
Closing speed [m/s]*	Up to (Standard) / (Option)	1,5
Opening cycles / duration in use*	Cycles in permanent use	30 cycles / hour (= 1 / minute)
	Augmented cycles, duration max. 1 hour	60 cycles / hour (= 2 / minute)
	Augmented cycles, duration max. 15 minutes	3 cycles / minute
Opening cycles*	In standard applications cycles per year	150.000
Door dimensions [mm]* (Clear opening width - c/o width)	(On inquiry) / Standard: width min. / max. / (max. on inquiry)	(2700) / 3800 / 9000 / (10000)
	PVC-free / antistatic or food safe coating: width min. / max.	on inquiry
Door dimensions [mm]* (Clear opening height - c/o height)	Standard: height min. / max.	2100 / 6000
Required space, top (lintel) [mm]*		480 or 880
Required space, lateral (not drive side) [mm]*	Minimum, with control fixed on the wall	525
Required space, lateral (drive side) [mm]*	Minimum, with control fixed on the wall	525
Required space, total depth [mm]*	Without additional equipment	650 or 690
Operating forces / Safe openings	Acc. to EN 13241-1**	fulfilled
Horizontal head section for the integration of the drive technology	Steel sheet, powder coated acc. to RAL 9005	■
	Steel sheet, powder coated acc. to RAL (special colours)	□
Vertical jamb housing for the integration of the skin winding technology	Steel sheet, powder coated acc. to RAL 9005	■
	Steel sheet, powder coated acc. to RAL (special colours)	□
Vertical pusher profile for the integration of the safety edge control technology	Steel sheet, powder coated acc. to RAL 9005	■
	Steel sheet, powder coated acc. to RAL (special colours)	□
Drive	Gear motor with double brake (WITH emergency release lever – closed when de-energised)	■
	Gear motor with double brake (WITHOUT emergency release lever – open when de-energised)	□
	Electric motor with frequency converter control - driving power [KW]	3,0 kW
Door skin*	Polyester fabric, PVC-laminated on both sides, similar to RAL 1003 Vision element (transparent panel), thermoplastic Elastomer (TPE-Film)	■
	Polyester fabric, PVC-laminated on both sides, in special colour Vision element (transparent panel), thermoplastic Elastomer (TPE-Film)	□
	PVC-free skin (only similar to RAL 1003)	□
	Food safe TPU coating, similar to FDA (only similar to RAL 1003)	□
	Antistatic equipment (only similar to RAL 1003)	□
	Low flammability (Building material class acc. to DIN 4102 - B1)	□
	Standard position of vision panel in height from - to (Special execution on inquiry)	1480 - 2000
Emergency operation	Actuated by Bowden cable lever - self-opening Note: if required the door can be pushed by hand to open completely)	■
	Automatic opening when de-energised Note: if required the door can be pushed by hand to open completely)	□
	Aptitude for installation in escape routes, acc. to DGVV 208/044 (German statutory accident insurance) (Note: Only for Germany: local legislation has to be respected)	□
	With uninterruptable power source	on inquiry
Control	4 KW frequency converter control , mains connection 400V / 50Hz (3,N,PE), fuse protection 16A , type C, earth leakage only Type B	■
Safety	Closing edge monitored by an optoelectronic sensor, integrated in the door leaves, with power supply via energy chain or trailing cable	■
	External photo eye	□
	External light curtain	□
	Anti-crash-protection (unlatch mechanism in the stay bars)	■
	Laser sensor	□
Equipment options	Pulse transmitter: mushroom button / Non-contact radar switch / Pull switch / Radio control	□
	Pulse transmitter: Reflection light scanner / radar motion sensor / Induction loop	□
	Airlock control	□
	Combination with SPACELITE or SECTIOLITE doors	□