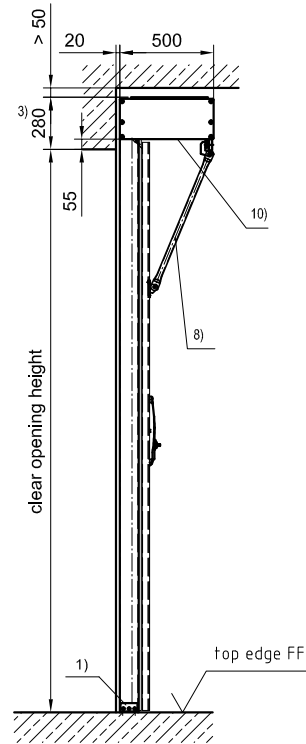
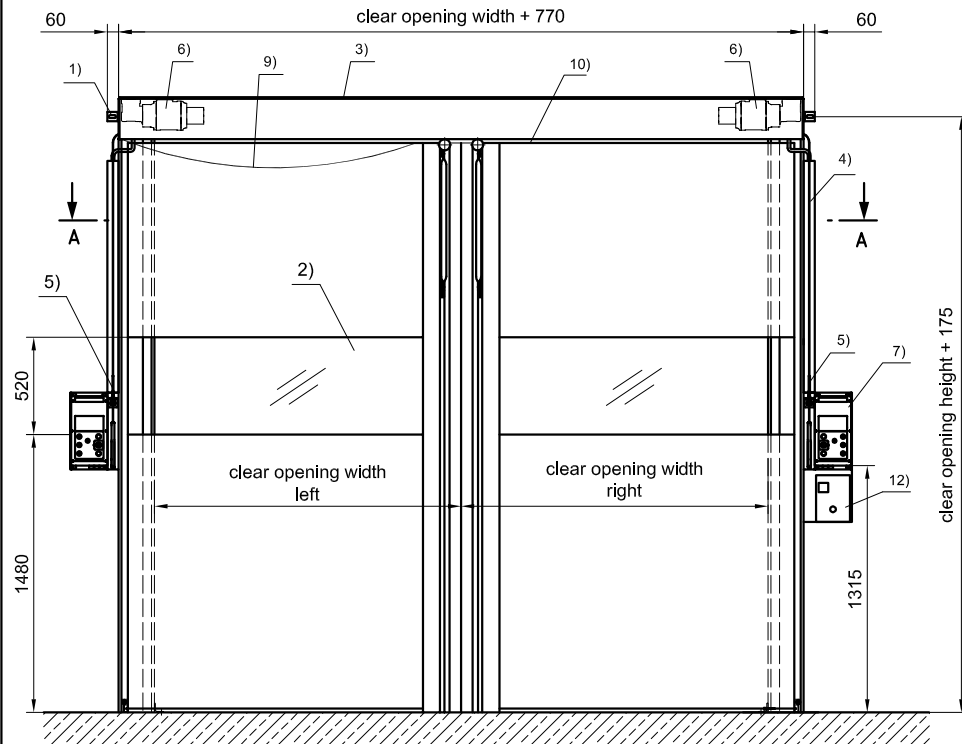


**view from inside**

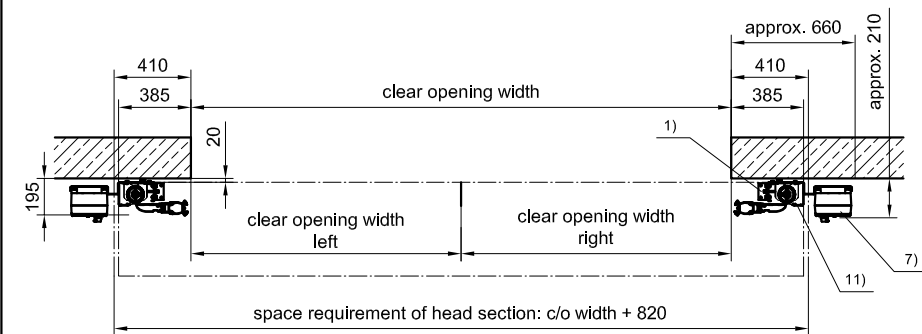
clear opening width + 770



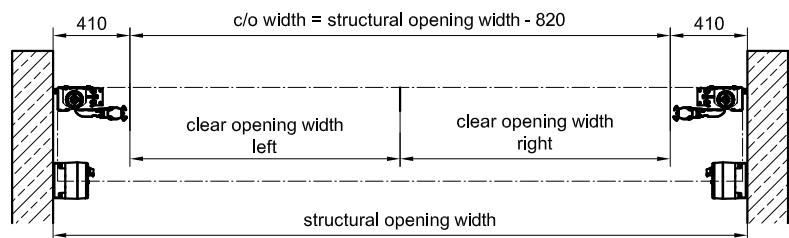
- 1) fixing bracket
- 2) vision element
- 3) top cover
- 4) cable duct
- 5) emergency operation
- 6) drive unit
- 7) standard control panel 370 x 194 x 155  
To be mounted on left and right jamb. As an alternative wall mounting is possible.
- 8) right stay bar: option: anti-crush protection with an unlatch mechanism for c/o height >2800  
for c/o height ≤ 2800: right stay bar = horizontal position
- 9) trailing cable c/o height > 2800
- 10) bottom cover incl. cable guide  
for c/o height ≤ 2800 standard  
for c/o height > 2800 option
- 11) cover for jamb housing is optional
- 12) control panel 250 x 180 x 130 with main switch  
To be mounted on left and right jamb. As an alternative wall mounting is possible.

**section A - A**

assembly behind the reveal



assembly within the reveal



1000 mm

**NOVOSPRINT Duo GA**

Ground closure

NOVOSPRINT\_Duo\_GA\_BA\_en

Feb. 2017

CAD:  
1.05/0507

Schutzvermerk ISO 16016

**BUTZBACH**

www.butzbach.com

Tel. +49-8337-901-0

subject to technical alterations!